

CM600 All-fiber OTDR



- Applicable fiber: SM MM PON
- <1.8m extra-short event dead zone
- Up to 32/30dB High Dynamic Range
- Distance Range: 4,8,16,32,64,128,256km
- 640x480, 5.7 inch TFT-LCD (touch screen)
- Garantía de 3 años
- USB interfaces, supporting USB stick and printer and direct cable download to PC via ActiveSync
- Memory capacity >800 traces
- Built-in lithium battery with high capacity for over 8 hours of operating life
- Display: Color LCD

Support four interface fiber types



FC



ST (Opcional)



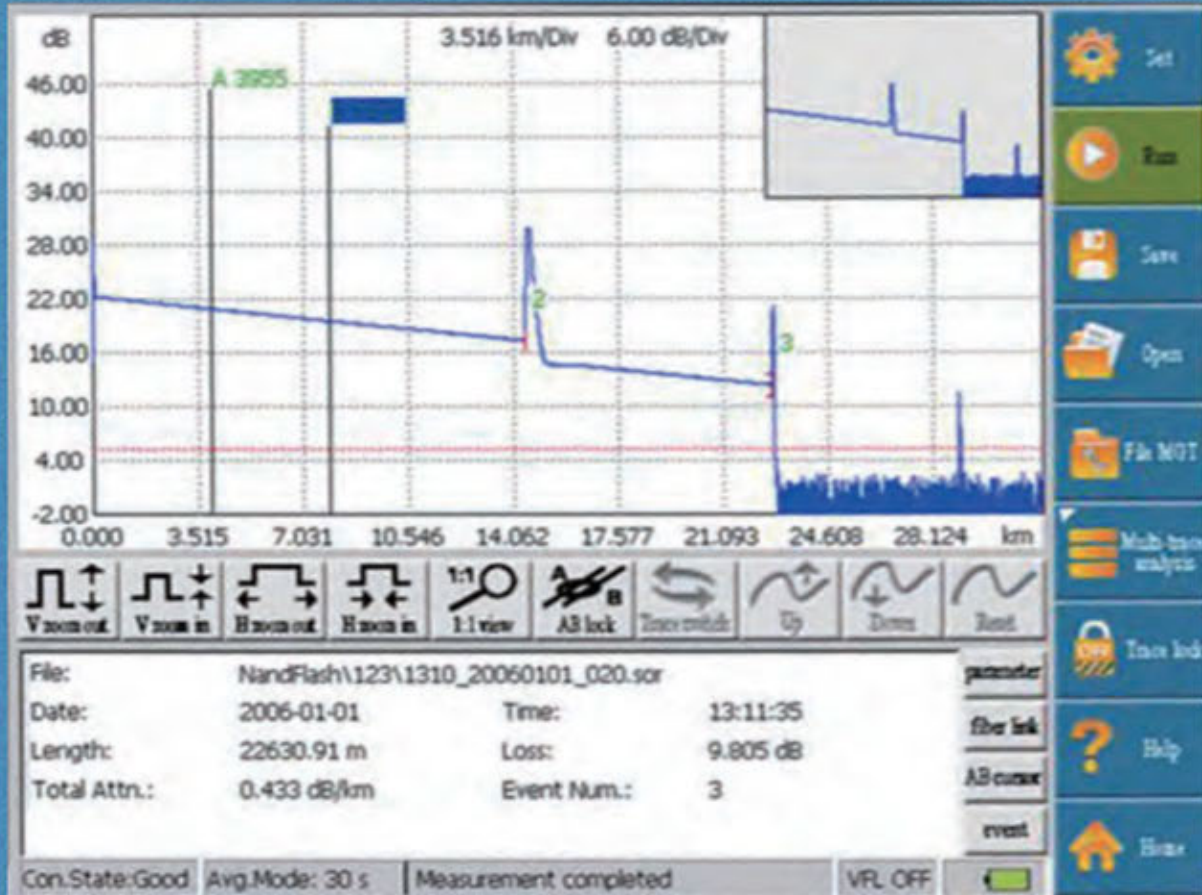
SC (Opcional)



LC (Opcional)

GUI interface

GUI interface design, operation is more simple, more intuitive reflection of the measurement results.



Color touch screen

Touch and key make operation more varied. To satisfy different people's habits and improve their work efficiency.





330times



8400mAh



recycled



Model code:

Code du modele

Serial number:

Numero de serie

Production date:

Date de production



CAUTION!
INVISIBLE LASER, AVOID EYE EXPOSURE, CLASS 1 LASER
Précaution!
Laser invisible, éviter l'exposition des yeux, produit laser

Product details



OTDR

VFL

DC

Charge

SD

USB

PRODUCT SPECIFICATION:

Modelo	CM600-M	CM600-S	CM600-P	CM600-MS	CM24CF
Wavelength(nm)	850/1300	1310/1550	1310/1550/1625	850/1300+1310/1550	1310/1550SMF+1625SMF
Rango dinámico (dB)	21/23	32/30	32/30/28	21/23+32/30	38/36/34
Build-in VFL	Y		N		
Applicable fiber	SM(ITU-T G.652)				
Rango de distancia (km)	0,1,0,5,1,2,5,10,20,30,50,100,200,240				
Ancho de pulso (ns)	5,20,40,80,160,320,640,1280,2560,5120,10240,20480				
Zona muerta del evento (dB)	1.8				
Zona muerta de atenuación (m)	3				
Conector óptico	FC/UPC (SC/LC/ST can be selected)				
Clase láser	Clase 1m				
Memoria de los trances	10.000 piezas				

CONFIGURATION LIST:

Bolsa de transporte X1

Correa X1

Cable de alimentación X1

Adaptador X1

Tarjeta SD X1

Lector de tarjetas X1

Certificate X1

Manual electrónico X1

Guía rápida X1

Calibration Certificate X1

Inspection Certificate X1